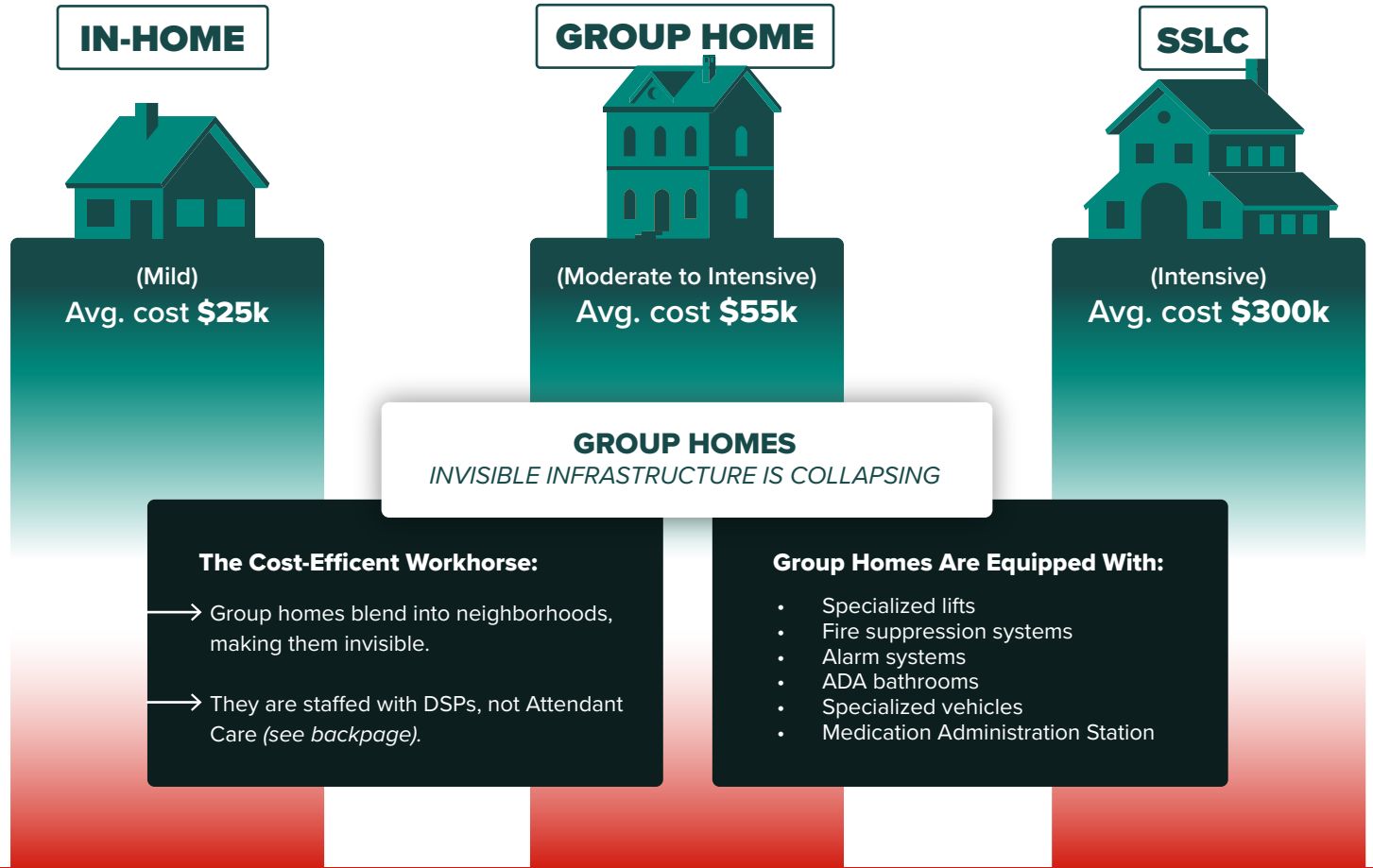


STABILIZE COMMUNITY-BASED IDD GROUP HOMES



There are three main tracks in which the IDD population are served in Texas. These are highly regulated by the HHSC. Neither the current funding, nor the proposed funding stabilizes the group home track, and it does not support federal and state requirements for health, safety, access and compliance. Below is the average annual cost to serve one individual in each of the three tracks.



MISALIGNMENT OF SERVICES INCREASES COST



According to Audited 2022 HHSC Cost Report Data, community-based IDD services need \$317 million GR to stabilize services. Of the \$317 million GR, providers lost \$40 million GR per year in critical infrastructure costs alone. As of 2024, approximately 400 group homes have closed. Urge lawmakers to stabilize and stop the collapse of community-based group homes in Texas.

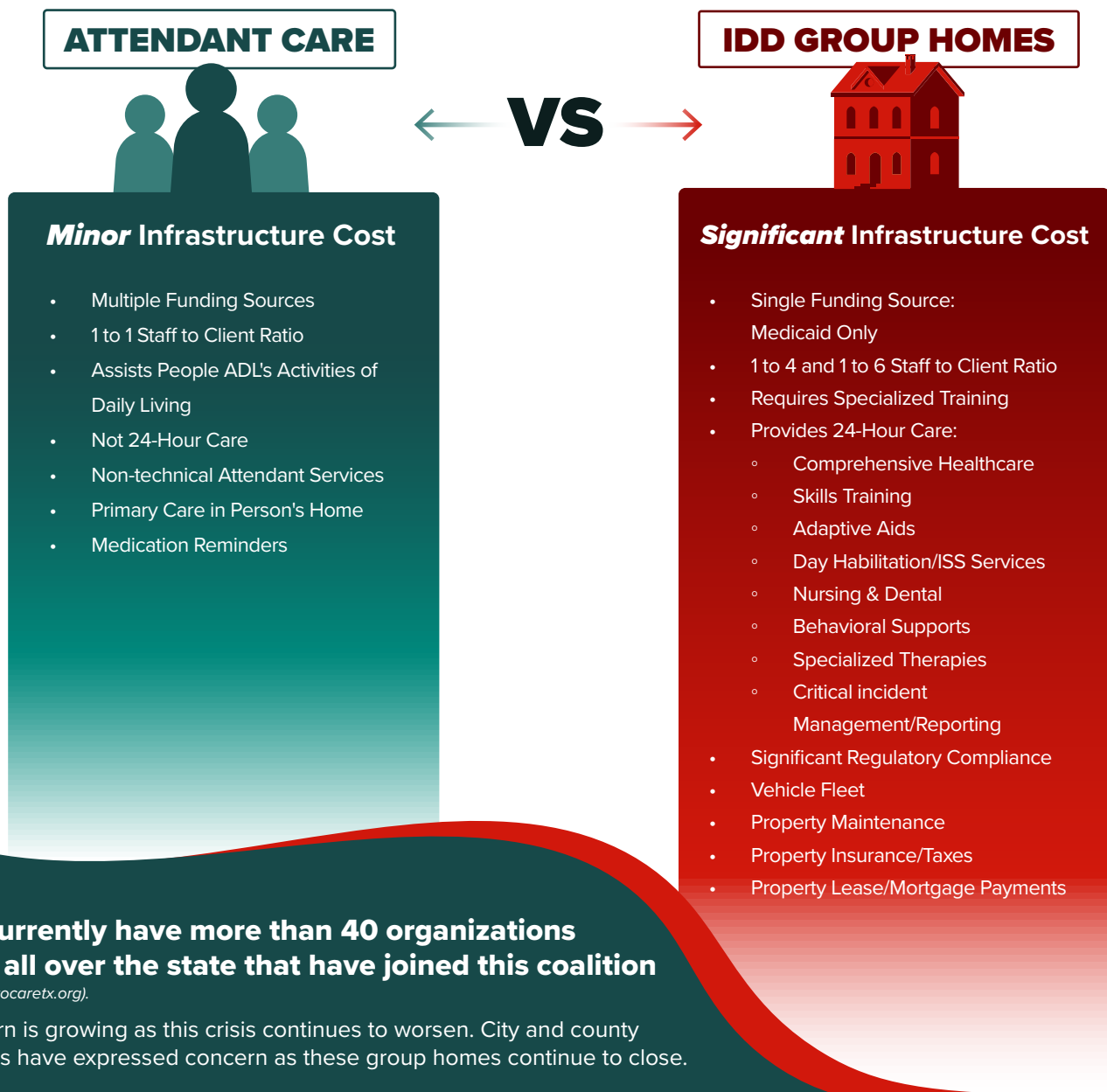
(see back page)

GROUP HOMES ARE NOT ATTENDANT CARE

The IDD community is an extraordinarily complex population to serve.

Approximately four years ago, HHSC placed IDD services in the Attendant Care category.

This was a significant mistake. IDD group homes are closing at an alarming rate partially due to this miscategorization, resulting in significant underfunding of IDD group Homes.



We currently have more than 40 organizations from all over the state that have joined this coalition

(see timetocaretx.org).

Concern is growing as this crisis continues to worsen. City and county Officials have expressed concern as these group homes continue to close.

Years of inadequate funding are causing the unraveling of this invisible infrastructure that has taken 50 years to build.

The public is becoming increasingly aware of and impacted by the crisis, as the media continues to report on this issue.

Lack of funding has placed IDD persons, the facilities, staff and the state of Texas at great risk.

How can we ignore this crisis?